

Connect Microscan Quadrus® MINI to OMRON PLC



- **Decodes/second: up to 10**
- **1.3 Megapixel Processing**
- **Patented Quadrus Technology**
- **Autofocus**

- The Quadrus® MINI imager reads all standard 2D or linear bar codes, plus multiple codes per capture.
- The Quadrus® MINI has dynamic realtime autofocus which automatically reads different codes, at varying distances, while in motion.
- Megapixel processing allows for reading multiple small, high density codes or long 1D codes.
- Includes Microscan's ESP® Easy Setup Program, a single-point software solution that provides quick and easy setup and advanced features.
- The Quadrus® MINI's small form factor allows for flexible positioning in tight spaces or mounting into robotic applications.

Quadrus® MINI Available Codes and Symbols

Linear	All Standard 	2D Symbols	Data Matrix 	QR
Stacked	MicroPDF 	PDF417 	GS1 Databar (RSS) 	



Quadrus® MINI Read Ranges

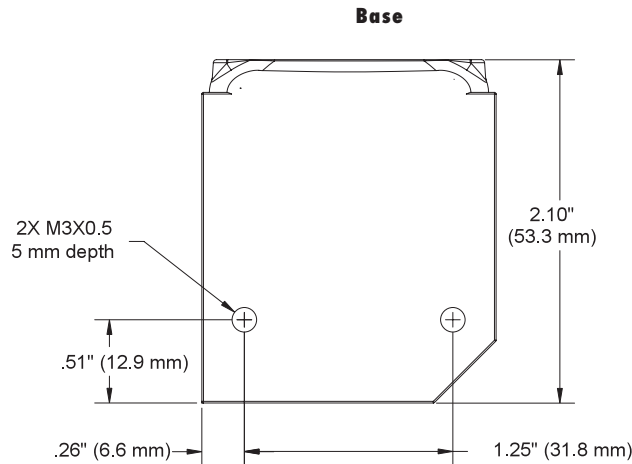
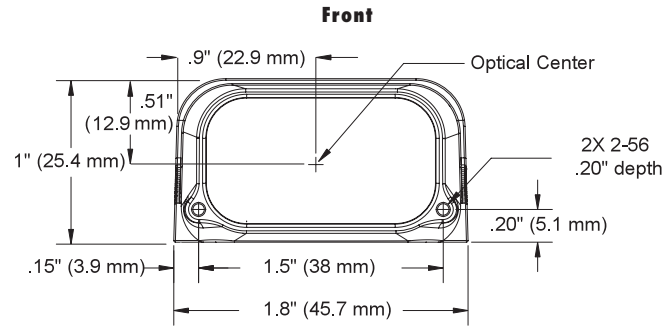
Narrow-bar-width		Field of View (maximum)	Read Range (using autofocus)
1D	2D		
Ultra High Density			
.0033" (0.08 mm)	.005" (0.13 mm)	2.2" (56 mm)	2.0 to 4.4" (51 mm to 112 mm)
.0075" (0.19 mm)	.010" (0.25 mm)	3.6" (91 mm)	1.8 to 6.7" (46 mm to 170 mm)
.015" (0.38 mm)	.020" (0.51 mm)	4.0" (102 mm)	1.9 to 7.7" (48 mm to 196 mm)
High Density			
.005" (0.13 mm)	.0075" (0.19 mm)	3.1" (79 mm)	1.5 to 6.0" (38 mm to 152 mm)
.0075" (0.19 mm)	.010" (0.25 mm)	4.2" (107 mm)	1.2 to 8.0" (30 mm to 203 mm)
.015" (0.38 mm)	.020" (0.51 mm)	5.6" (142 mm)	0.9 to 10.5" (23 mm to 267 mm)
Standard Density			
.005" (0.13 mm)	.0075" (0.19 mm)	3.2" (81 mm)	1.8 to 3.5" (46 mm to 89 mm)
.0075" (0.19 mm)	.010" (0.25 mm)	4.2" (107 mm)	1.6 to 5.0" (41 mm to 127 mm)
.010" (.25 mm)	.015" (0.38 mm)	6.8" (173 mm)	1.4 to 7.5" (36 mm to 191 mm)
.020" (0.51 mm)	.030" (0.76 mm)	9.5" (241 mm)	1.0 to 11.0" (25 mm to 279 mm)

Quadrus® MINI Specifications

HOST CONNECTOR/PIN ASSIGNMENTS
High Density 15 Pin D-sub Socket Connector

Pin No.	Host RS232	Host/Aux RS232	Host RS422/485	In/Out
1	Power +5 VDC			In
2	TxD	TxD	TxD(-)	Out
3	RxD	RxD	RxD(-)	In
4	Power/Signal Ground			
5	NC			
6	RTS	Aux TxD	TxD(+)	Out
7	Output 1 TTL ^a			Out
8	Default configuration ^b			In
9	Trigger			In
10	CTS	Aux RxD	RxD (+)	In
11	Output 3 TTL ^a			Out
12	New Master (NPN)			In
13	Chassis ground ^c			
14	Output 2 TTL ^a			Out
15	NC			

a. Can sink 10 mA and source 10 mA.
b. The default is activated by connecting pin 8 to ground pin 4.
c. Chassis ground: Used to connect chassis body to earth ground only. Not to be used as power or signal return.

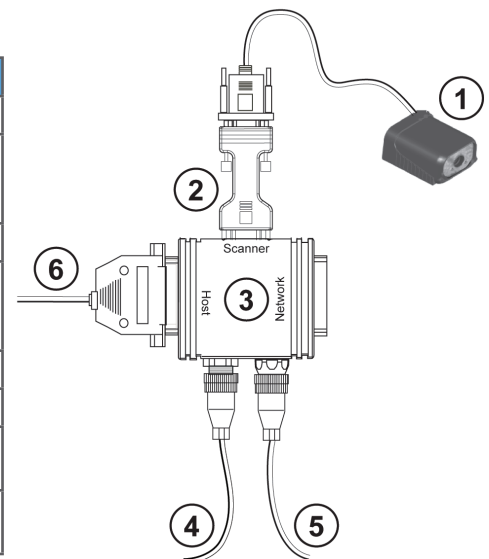


Quadrus® Mini Configuration

Stand Alone - A single imager is connected directly to the host. This is the basic setup for a single Quadrus® Mini.

System Matrix

Product	Reference No.	Description
(1) Quadrus™ MINI	FIS-6300-0001	Imager Model
(2) IC-332	FIS-0001-0035	Adapts an imager to an MS-9 pinout, converts the voltage level to 10-28, allows connection to the IB-131
(3) IB-131	99-400005-02	Interface box
(4) Power Supply	S8VS-01505 97-100004-12 (220V)	Power supply, 100~240VAC, 5VDC 3-pin microchange connector; 8.7\" (2.7 m) (Req'd.)
(5) Object Detector	99-000017-01	Photoelectric sensor
(6) Comm. Cable	61-300026-01	25 pin plug to 9-pin socket, 6' (1.8 m)
Mounting Arm/ Adapter Kit	98-00048-01 98-00048-02	4\" (102 mm) mounting kit 3\" (76 mm) mounting kit
EPS Software/ User's Manual (CD)	37-000001-01	Windows configuration software and Quadrus™ Mini User's Manual



OMRON ELECTRONICS LLC • THE AMERICAS HEADQUARTERS • Schaumburg, IL USA • 847.843.7900 • 800.556.6766 • www.omron247.com

OMRON CANADA, INC. • HEAD OFFICE
Toronto, ON, Canada • 416.286.6465 • 866.986.6766 • www.omron.ca

OMRON ELECTRONICS MEXICO SA DE CV • HEAD OFFICE
Apodaca, N.L. • 52.811.156.99.10 • mela@omron.com

OMRON ELETRÔNICA DO BRASIL LTDA • HEAD OFFICE
São Paulo, SP, Brasil • 55.11.2101.6300 • www.omron.com.br